



IQ-Core Endpoint Configuration Assistant (ECA)

Rapidly onboard end user devices (EUDs) in Commercial Solutions for Classified (CSfC) enclaves

The National Security Agency (NSA) CSfC program defines requirements for EUDs to transmit and receive classified data over untrusted or vulnerable networks with the use of commercially available technology.

Manual configuration of EUDs for this application can be very complex and time consuming, with a high probability of errors.

IQ-Core® ECA is a software utility which automates the security configuration of EUDs for a CSfC enclave, offering a significant reduction in time and effort when compared to manual CSfC client configuration.

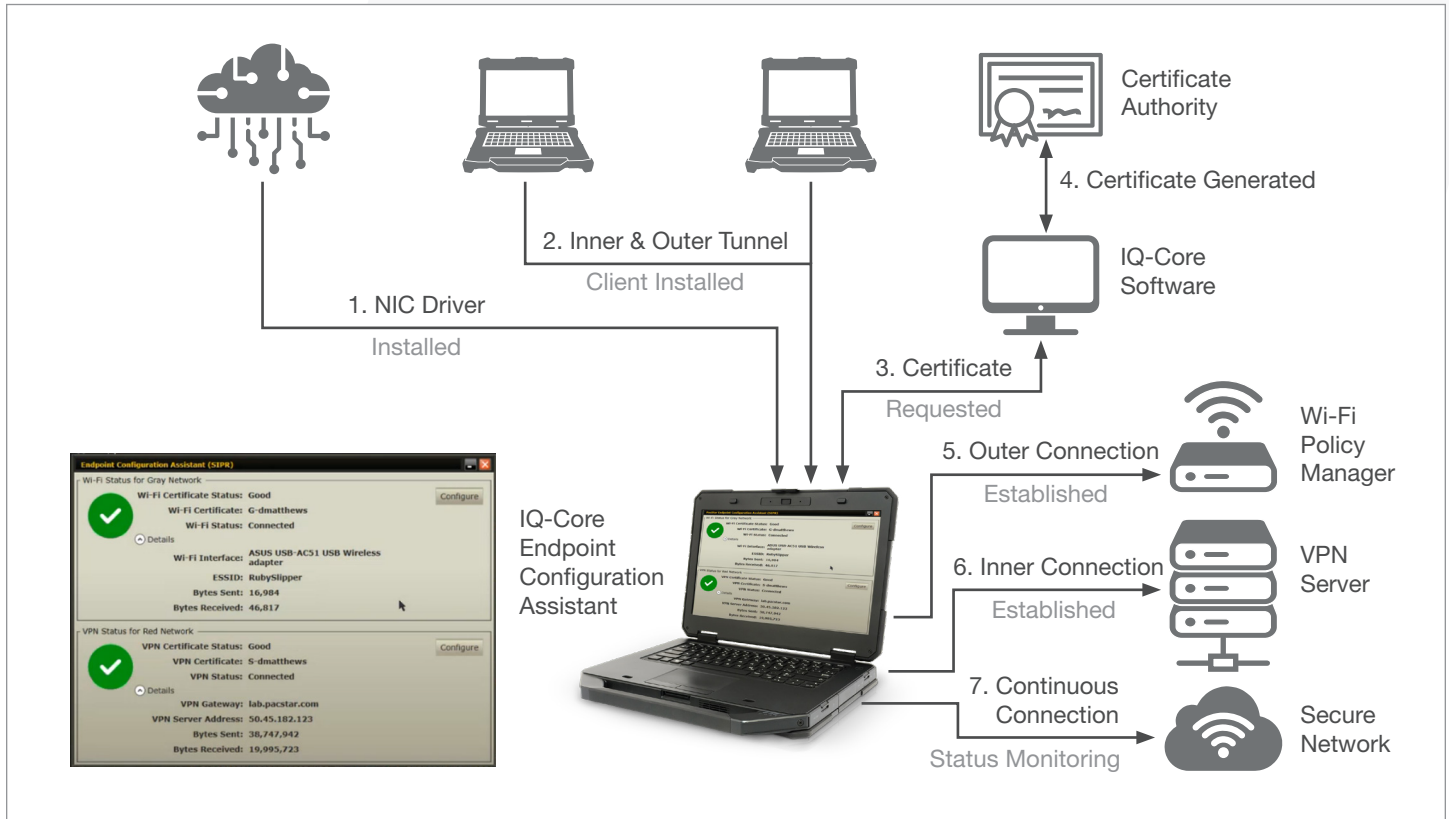
Key Features

- Simple, intuitive interface
- Supports single or double tunnel encryption for multiple enclave types (NIPR, SIPR, Coalition)
- Ease of use dramatically reduces setup time and errors
- Interoperable with IQ-Core Software
- Helps enforce consistent security policy across multiple EUDs
- Wizards automate complex tasks
- Vendor Agnostic Multicast (VAM) support (optional)

Applications

- For Microsoft Windows EUDs

Use Case Diagram



Features

One utility for an automated workflow

IQ-Core ECA application installs directly on the EUDs to automate multiple tasks as shown in the diagram above.

Note: Before installation, the administrator can define a custom template (defaults file) to auto-populate data fields, reducing installation time and helping to enforce configuration consistency among EUDs.

1. Network interface drivers
 - Installation
 - Configuration, including IP address settings
2. Tunnel Clients
 - Inner Client installation
 - Outer Client installation
 - Profile Configuration
3. Certificate Wizard (part 1)
 - Certificate Request
 - Key creation & retention
4. Certificate Wizard (part 2)
 - Certificate Signing Request (CSR) – Manual
 - Certificate Signing Request (CSR) – Automated using IQ-Core Software access to Certificate Authority
5. Outer Tunnel
 - Connectivity status displayed on main screen (below)
6. Inner Tunnel
 - Connectivity status displayed on main screen (below)
7. Connected
 - When both tunnels show green status, you are connected to the destination network.
 - Connection status is continuously updated at an interval defined by the administrator.

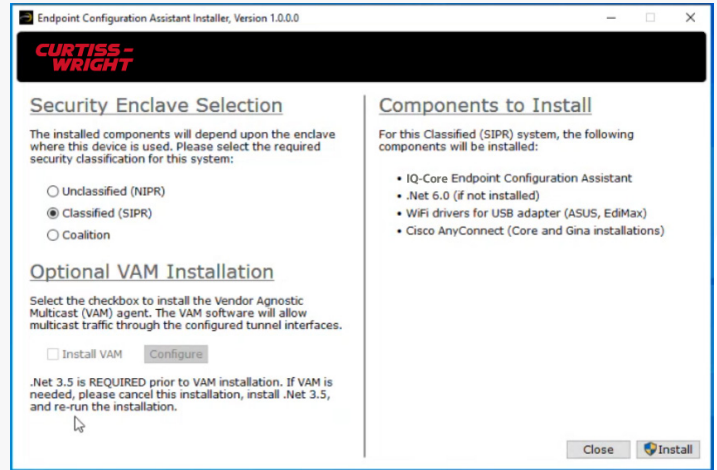
PacStar Endpoint Configuration Assistant (ECA)

Enclave Selection

The installer allows you to select the target security enclave type for configuration of single tunnel or double tunnel encryption.

Custom templates (defaults files) can be used for consistent security policy and compliance among EUDs.

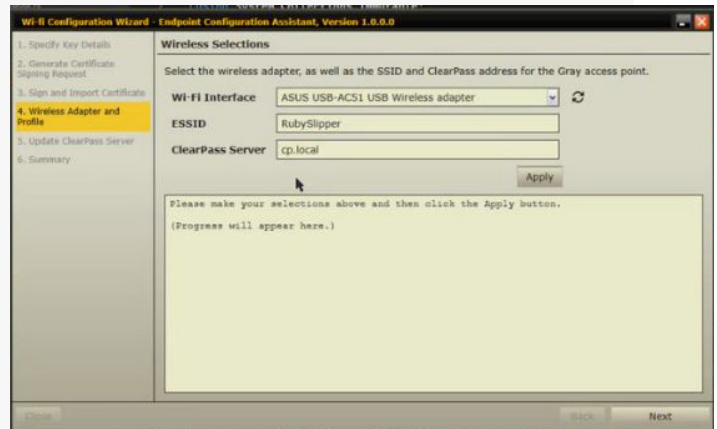
Vendor Agnostic Multicast (VAM) can optionally be supported on systems with .Net 3.5.



Outer VPN tunnel and interface type

IQ-Core Software automates installation and configuration of the outer VPN client, and integrates with existing IQ-Core Software (where available) for a quick, seamless experience.

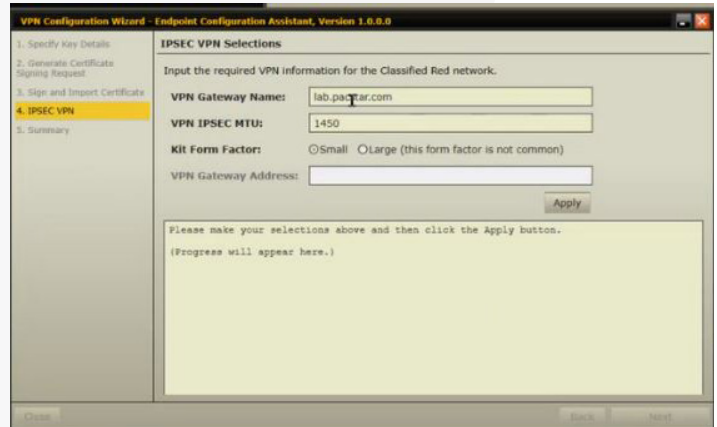
Multiple interface types are supported and Extended Service Set Identifiers (ESSID) can be defined during installation.



Inner VPN tunnel

When double-tunnel enclaves are selected (SIPR, Coalition), IQ-Core Software automates installation and configuration of the inner VPN client.

Gateway name and settings can be auto-populated with the custom profile template (if used).



PacStar Endpoint Configuration Assistant (ECA)

Benefits

Consistent Compliance with NSA guidelines

IQ-Core Endpoint Configuration Assistant helps ease the burden of compliance with NSA CSfC guidelines offering a repeatable and consistent configuration experience on EUDs by using custom profile templates. IQ-Core Software automates configuration of multiple components on the NSA approved components list.

Save time, reduce complexity

IQ-Core Endpoint Configuration Assistant is easy to install and easy to use, with a simple point-and-click interface that is familiar to users of IQ-Core Software. Integration with IQ-Core Software expands the capabilities of ECA further, offering a rapid path to onboarding EUDs and reducing the risk of configuration errors.

PacStar Endpoint Configuration Assistant (ECA)