



901D-CE-MCS-LAN

LAN Drop Box Enclosure

Key Features

- Customizable: pay-load ready, semi-custom, or fully integrated
- HMI for the MCS LAN
- Speaker for audio interface
- Ethernet/power ports for laptop connectivity
- Includes EMI filter

Applications

- Naval COTS Electronics
- MCS LAN HMI

The 901D-CE-MCS-LAN is part of Curtiss-Wright's 901D portfolio of ruggedized electronics cabinets, consoles, workstations, and full integration services for naval and other rugged applications deployed in harsh military environments.

Design Philosophy

The core of Curtiss-Wright's Mission-Driven Enclosure design approach is partnership. Every program begins with collaboration, working with our customers to understand their specifications, operational environment, and program requirements. Combining our technical expertise with a deep commitment to collaboration, we help our customers accelerate development cycles, reduce risk, and ensure compliance with stringent military and industry standards. This approach ensures that we're not just building an enclosure, but creating a solution tailored to the mission.

Product Overview

The 901D-CE-MCS-LAN is a customized hardware solution developed for the Machinery Control System (MCS) in assault ships. The MCS controls the major shipboard systems, including the highly automated propulsion, electric plant, and fuel fill systems.

Used as a Human Machine Interface (HMI) with a ship's Local Area Network (LAN), the 901D-CE-MCS-LAN enclosure includes a COTS payload, repackaged for the stringent shipboard environment. The panel enclosure engages with the ship's LAN via an Ethernet and power port for maintenance laptops. A speaker and microphone enable audio interfacing.

A member of the 901D portfolio of engineered enclosures and integrated systems, the 901D-CE-MCS-LAN offers flexibility for humans to interface with a ship's LAN on any Navy platform.

Specifications

Physical

- Chassis Dimensions: 13.9 in H x 10.4 in W x 9.3 in D
- Weight: 30 lb. fully populated
- Material: Steel, welded construction

Installation

- Vessel Interface: Rear mounted
- Equipment: COTS HMI system
- I/O: Top, cable glands

Configuration

- Door: Front with 180° swing
- Network: Ethernet Cat 5e connection to the ship's LAN
- Speaker: Maintenance audio interface
- Gaskets: Gasket for drip and EMI mitigation is installed on the door

Environmental

Configuration (Designed to)

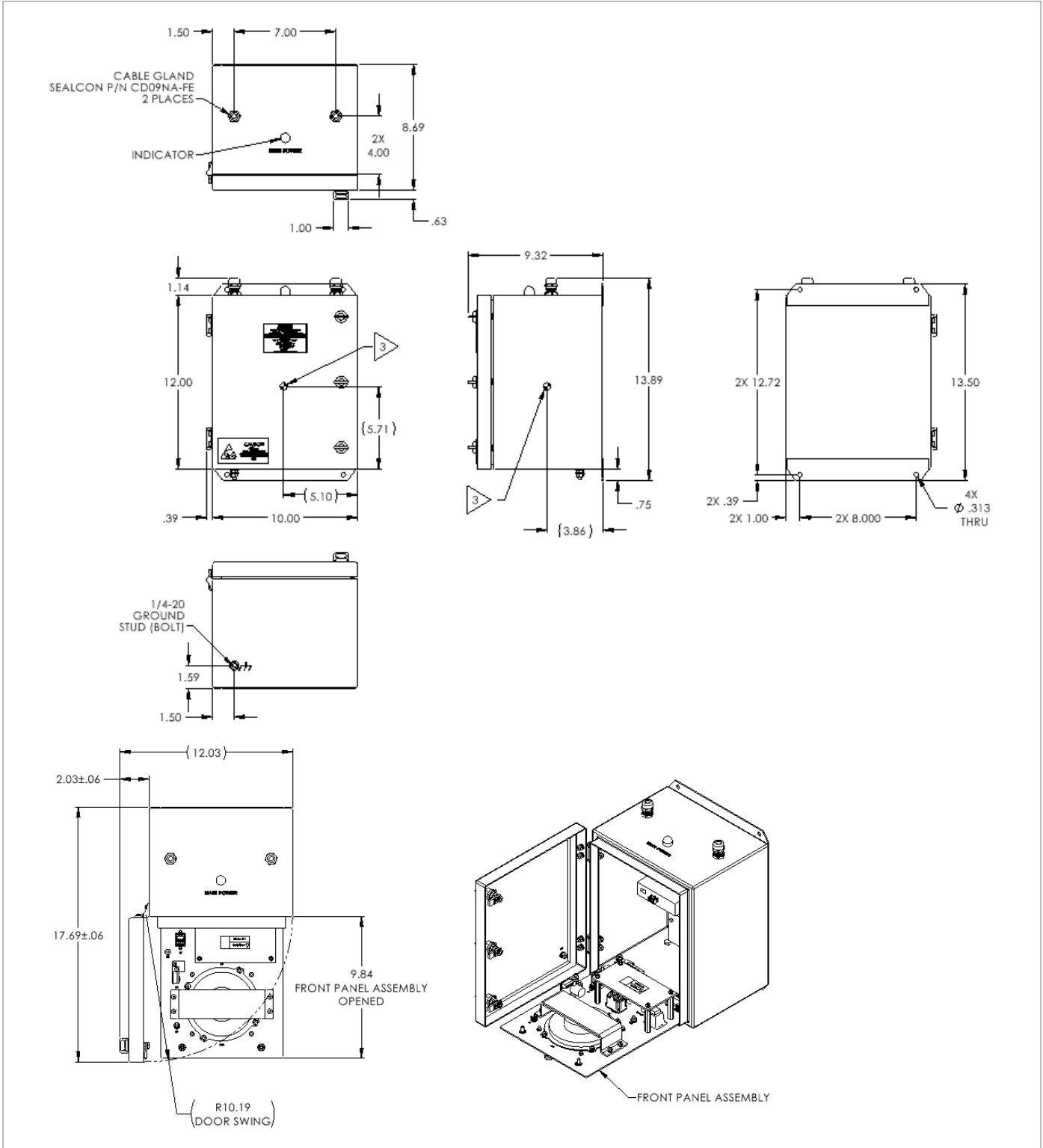
- Shock: MIL-DTL-901E, Grade B, Class I
- Vibration: MIL-STD-167-1A, Type I
- EMI/RFI: MIL-STD-461G, surface ships
- Thermal and Drip, MIL-STD-810H

Note: All dimensions, features, and environmental characteristics can be customized to meet customer requirements



901D-CE-MCS-LAN

Installation Drawings



901D-CE-MCS-LAN

©2026 Curtiss-Wright - All rights reserved. Specifications are subject to change without notice. All trademarks are property of their respective owners | D629.033126. This document was reviewed on 04.14.2026 and does not contain technical data.